



Next LearningPlatform[®]
Learning Anytime, Anywhere

RELEASE

NOTES

JULY 2022 UPDATES

19 SUBJECTS



Next Education[®]
Transforming Education

Creating a **Brighter Tomorrow** for Today's Students

CONTENTS

Accounts	04
Assignment	04
Exam Corner	04
Examination	04
Fee	05
Inventory	05
LMS	06
NLP	06
Payroll	06
Student	07

Dear Sir/Madam,

In our endeavour to impart quality education, we have implemented our premier software, NextLearningPlatform (NLP), in your school. Our software aims to meet the dynamic needs of present-day schools. This software release incorporates a series of new features and improvements which include the following:



ADDITIONS IN THIS RELEASE

Module	Subject	Path
Accounts	A Balance Sheet report has been introduced which will provide information about assets, liabilities and equity of the organisation. Further, these assets will be divided into current and fixed assets. Similarly, liabilities will also be divided into current and fixed liabilities.	Accounting > Reports > Balance Sheet
	Option to edit vouchers can be enabled or disabled for specific roles.	Accounting Settings > General Settings
Assignment	Now, assignments can be copied directly from the assignment creation page to other sections. After creating an assignment, teachers must select the 'Save & Copy' option. In the next window, they can choose other sections and they will be able to add or change recipients as well.	Teacher workspace > Assignment > Create > Save and Copy
Exam Corner	A filter has been added under Analytics in which a desired exam can be selected from the list to consider for Analytics.	Teacher Workspace > Exam Corner > Click on Analytics
Examination	Implementation of subject-level rankings for assessment, term, and overall level has been done, both class-wise and stream-wise. For subject-level rank to be displayed in Report Card, the 'Enable/Disable Subject Rank' toggle button on the rank configuration page must be activated (you will find the page in examination settings). However, manual key insertion is required in RC designer.	Examination > Examination Settings > Rank Configuration

ADDITIONS IN THIS RELEASE

	<p>Now, the admission number can be used to retrieve parent and corresponding child details if primary contact is mapped in the payment collection screen search by PA.</p>	<p>Fee > Collect Fee</p>
	<p>The Fee Defaulters list will be displayed on the dashboard of the class teacher(s) based on the classes mapped to them.</p>	<p>Class Teacher Dashboard > Top Defaulters Widget</p>
<p>Fee</p>	<p>Under the Fee Receipt History page, fee receipt can be viewed and printed from a pop-up directly and it need not to be downloaded first.</p>	<p>Fee > Collect Fee > Receipts History > Preview</p>
	<p>Now, a cheque can be moved to the bounced status directly from the received status. Not only this, but the cheque status can also be updated in bulk from the Cheque-DD payments page.</p>	<p>Fee > Collection Fee > Cheque-DD Payments > Select Multiple > Click on Change status</p>
	<p>Under fee reports, VAT will also be displayed in the historical fee due report as well as the Fine and concession column has been included in the fee paid due report.</p>	<p>Fee > Reports > Historical Fee Due Report</p>
<p>Inventory</p>	<p>Now, users can request a service for the items directly from the Purchase Request page. They only need to select a service type, provide the service name, description, and location and the names of the items to be serviced under the service details table on the Create Requirement page.</p>	<p>Inventory > Purchase Request > Create Purchase/Requirement/Purchase Order</p>

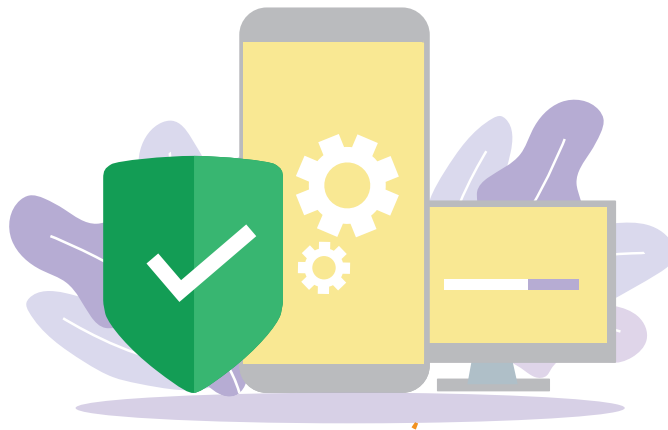
ADDITIONS IN THIS RELEASE

LMS	<p>A button has been introduced on top of the course plan tab. Now, teachers can easily switch to a different course directly. Once they click the button, they will get a list of options of other mapped courses to choose from.</p>	<p>Teacher Workspace > select course > Course switch button on the left top</p>
	<p>On the course plan page, teachers will be able to rename their uploaded or created resources. They don't need to re-upload the resources in order to change the name of a file.</p>	<p>Teacher Workspace > select course > Course plan > resources > 3dotted icon on the resource > rename</p>
	<p>Subjects will be deleted automatically, if there are no active chapters present in a course plan</p>	<p>NA</p>
NLP	<p>Custom field support has been added in the branch details page.</p>	<p>Settings > School Setup > Branch Details</p>
Payroll	<p>Increment/Decrement feature in salary structure has been introduced which allows users to increase/decrease salaries of staff by absolute or percentage method.</p>	<p>Payroll > Salary Structure > Click on Edit</p>
	<p>The user can add arrears in the salary of individual staff for various salary components.</p>	<p>Payroll > Salary register > Click on Dots to view</p>

ADDITIONS IN THIS RELEASE

Student	Anecdote Report has been implemented under the Student Behaviour Module so that teachers can record anecdotes of students' behaviour, skills, attitude, performance and classroom incidents.	Student > Student Behaviour > Behaviour Management
	Rewards under the Behaviour Management will be displayed in the student 360 feedback section as well for all the roles.	Student > Student List > Select Student

INSTALLATION/ UPGRADE NOTES



We highly recommend the use of Mozilla Firefox and Google Chrome browsers to access NLP. Find the latest versions at <https://support.mozilla.org/en-US/kb/update-firefox-latest-version>

Use the latest version of Adobe Reader for downloads. It can be accessed at <http://get.adobe.com/reader>

COPYRIGHT INFORMATION

This document is a property of Next Education India Private Limited, and hence its circulation is limited to the customer schools. Printing additional copies is not permitted without authorised approval.



Next Education, NextGurukul, LearnNext and NLP are the registered trademarks of Next Education India Private Limited (www.nexteducation.in).

Other product names mentioned in the Release Notes are the registered trademarks of the respective companies.



Next.Education[®]
Transforming Education



A vibrant community
for K-12 stakeholders



Next Education India Private Limited

Sri Nilaya Cyber Spazio, Road #2,
Banjara Hills, Hyderabad 500034,
Telangana, India.

Toll-free
Call 1800 200 5566

Monday to Saturday (8:00 AM to 6:00 PM)

www.nexteducation.in

support@nexteducation.in

Hyderabad | Kochi | Noida | UAE