



**Next.LearningPlatform**<sup>®</sup>  
Learning Anytime, Anywhere

**RELEASE**

**NOTES**



**MAY 2022 UPDATES**

**30 FEATURES**



**Next.Education**<sup>®</sup>  
Transforming Education

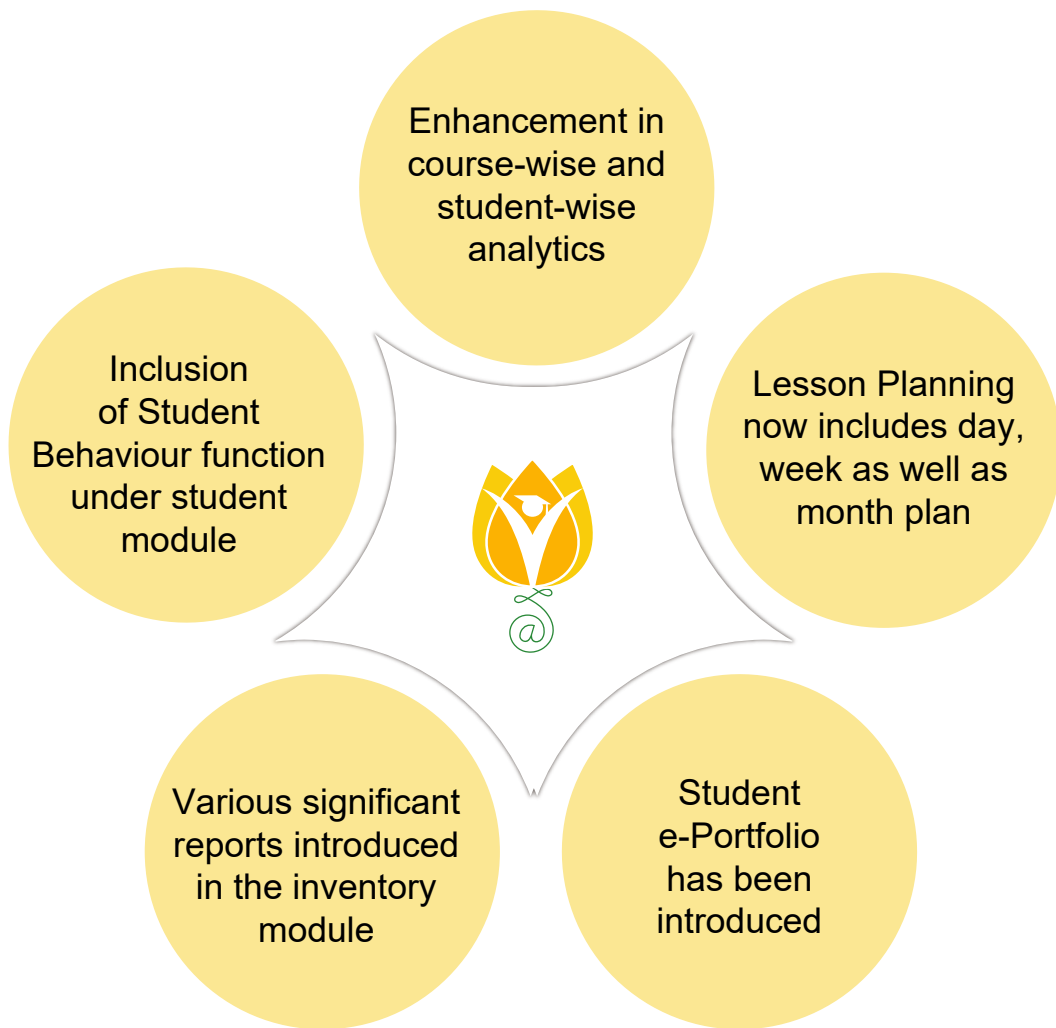
Creating a **Brighter Tomorrow** for Today's Students

# CONTENTS

Accounting	04
Admission	04
Attendance	04
Fee	04
Inventory	04 & 05
LMS	05 & 06
Payroll	06
Staff	06
Student	06
NLP app update	06 & 07

**Dear Sir/Madam,**

In our endeavour to provide quality education, we have implemented our premier software, NextLearningPlatform (NLP) in your school. Our software aims to meet the dynamic needs of present-day schools. This software release incorporates a series of new features, improvements and additions which include the following:



# ADDITIONS IN THIS RELEASE

Module	Feature	Description
Accounting	Enhancements in payments	Payments approval mechanism has been introduced via Approval/Rejection
Admission	Enhancement in admission module for parents	Option for parents to apply for sibling's admission in the Parent login has been provided
Attendance	Enhancements in attendance summary report	The attendance percentage of students based on the date range will be displayed along with the graph in attendance report format
Fee	Enhancement in fee reports	Transaction ID column has been added in fee collection custom report
		Now, fee reports can be created for a specific school in case of chain schools
Inventory	Enhancement in purchase options	An option to cancel the purchase request has been added in the following pages: <ol style="list-style-type: none"> <li>1. Request Quote</li> <li>2. Approve Quote</li> <li>3. Created Purchase order and</li> <li>4. Received Goods</li> </ol>
	Enhancements in sale options	Now, sale order records can be deleted and upon deletion the corresponding receipts would be cancelled.
		Assets can be tagged under a sale order from now on.
	Enhancements in product options	Adjustment items tagging and transfer Items tagging has been added in both adjustment and Item transfer pages respectively.
A search button has been added to the in-store products tab.		
Enhancements in inventory reports	The following reports have been introduced in Inventory Module: <ol style="list-style-type: none"> <li>1. Purchase Order Report</li> <li>2. Direct Purchase Report</li> <li>3. Stock Verification</li> <li>4. Audit Report</li> <li>5. Purchase Requisition Report- The requisition report will detail all of the sale and purchase requests that were requested to their respective requestors</li> </ol>	

# ADDITIONS IN THIS RELEASE

Inventory	Enhancements in inventory reports	<p>6. Issue Requisition Report- This report will contain all of the information regarding the issue requests raised by the staff</p> <p>7. Fixed Assets Report- The fixed assets report will provide fixed asset information and will be useful in determining who issued them and where they are located</p>
LMS	Analytics enhancements	Course-wise as well as student-wise exam performance analytical reports are available under exam corner now.
	Enhancements in course plan	<p>The serial numbers has been added in chapters on the course page, for example:-</p> <ol style="list-style-type: none"> <li>1. Real Numbers</li> <li>2. Whole Numbers</li> <li>3. Algebra</li> </ol> <p>New features in lesson planning are as follows:</p> <ol style="list-style-type: none"> <li>1. Day plan- the most detailed standards-based plan that a teacher can develop as it includes the name and summary of the lesson, learning objectives, teaching strategies and learning outcomes. It can also be mapped to a specific date which will reflect under the calendar view</li> <li>2. Weekly plan- a working document that shows what a teacher is planning to do and teach over a week-long period and it usually includes chapter names, session numbers, learning objectives, activities, resource types and assignments for each class throughout the week</li> <li>3. Monthly Plan- a summary plan which includes chapter/sessions to be covered, learning objectives, resources and assignments of every working day for four weeks in a month</li> <li>4. Apart from the existing feature of creating teaching plans, there is now an option to upload files directly where the uploaded files will act as the teaching plan</li> <li>5. Teachers will also be able to download the created teaching plans</li> </ol>
		<p>Apart from the current chapter view, the Course Plan page will now have an option to switch to Calendar View where teachers will be able to see the Academic Calendar (tree view) and plan their lessons for days, weeks and even months</p>

# ADDITIONS IN THIS RELEASE

LMS	Student e-Portfolio introduced	<p>Student e-Portfolio has been introduced and displays the following details:</p> <ol style="list-style-type: none"> <li>1. Assessment profile</li> <li>2. Classroom engagement</li> <li>3. Overall homework submission percentage</li> <li>4. Overall classwork submission percentage</li> <li>5. Course engagement</li> </ol>
Payroll	Enhancement in history of loan and deductions	<p>Under staff requests, the history of loans and deductions now includes six new fields:</p> <ol style="list-style-type: none"> <li>1. Total number of instalments</li> <li>2. Paid instalments</li> <li>3. Pending instalments</li> <li>4. EMI amount</li> <li>5. Total paid amount</li> <li>6. Total pending amount</li> </ol>
	Conditions imposed on salary advance deductions	<p>The following conditions have been imposed on validation for approval of salary advance deduction:</p> <ol style="list-style-type: none"> <li>1. Salary advance requests will be approved even if the amount is greater than salary</li> <li>2. In case multiple salary advance requests are raised with all having amounts exceeding net salary, the deduction will happen for the salary advance which got approved first</li> <li>3. In loan EMIs and salary advance, loan EMIs will be given preference over salary advance requests in the deduction</li> </ol>
Staff	Enhancement in staff profile	Job description' field has been added for staff in the staff profile under the employment tab
Student	Enhancement in behaviour module	Incident reporting system is now a part of behaviour under student module
		Student remarks is now a part of student behaviour under student module
NLP app update	NLP android V2.28 and ios v2.8	NextAcademy support has been introduced in the app as well.
		Offline /Online icons and proctoring icons are added under examination module
	NLP ios v2.8	Period-wise attendance can be marked by class teacher through the NLP app
		Calendar enhancements are introduced which supports all events as per web for all three roles and different time zones
		A quizzer feature has been added in the app

# ADDITIONS IN THIS RELEASE

NLP app update	NLP ios v2.8	e-mandate - Recurring payment in the parent app
		Class teachers will be able to view the student list based on the mapped class/section
	Custom field details in student login should not be visible if disabled in admin login	
NLP Android v2.28	Maps under the transport module have been upgraded to 18.0.x.	

# INSTALLATION/ UPGRADE NOTES



We highly recommend the use of Mozilla Firefox and Google Chrome browsers to access NLP. Find the latest versions at <https://support.mozilla.org/en-US/kb/update-firefox-latest-version>

Use the latest version of Adobe Reader for downloads. It can be accessed at <http://get.adobe.com/reader>

## COPYRIGHT INFORMATION

This document is a property of Next Education India Private Limited, and hence its circulation is limited to the customer schools. Printing additional copies is not permitted without authorised approval.



Next Education, NextGurukul, LearnNext and NLP are the registered trademarks of Next Education India Private Limited ([www.nexteducation.in](http://www.nexteducation.in)).

Other product names mentioned in the Release Notes are the registered trademarks of the respective companies.





**Next.Education**<sup>®</sup>  
Transforming Education



A vibrant community  
for K-12 stakeholders



**Next Education India Private Limited**

Sri Nilaya Cyber Spazio, Road #2,  
Banjara Hills, Hyderabad 500034,  
Telangana, India.

Toll-free  
**Call 1800 200 5566**

Monday to Saturday (8:00 AM to 6:00 PM)

[www.nexteducation.in](http://www.nexteducation.in)

[support@nexteducation.in](mailto:support@nexteducation.in)

Hyderabad | Kochi | Noida | UAE