



**Next.LearningPlatform**<sup>®</sup>  
Learning Anytime, Anywhere

**RELEASE**

**NOTES**



**APRIL 2022 UPDATES**

**19 FEATURES**



**Next.Education**<sup>®</sup>  
Transforming Education

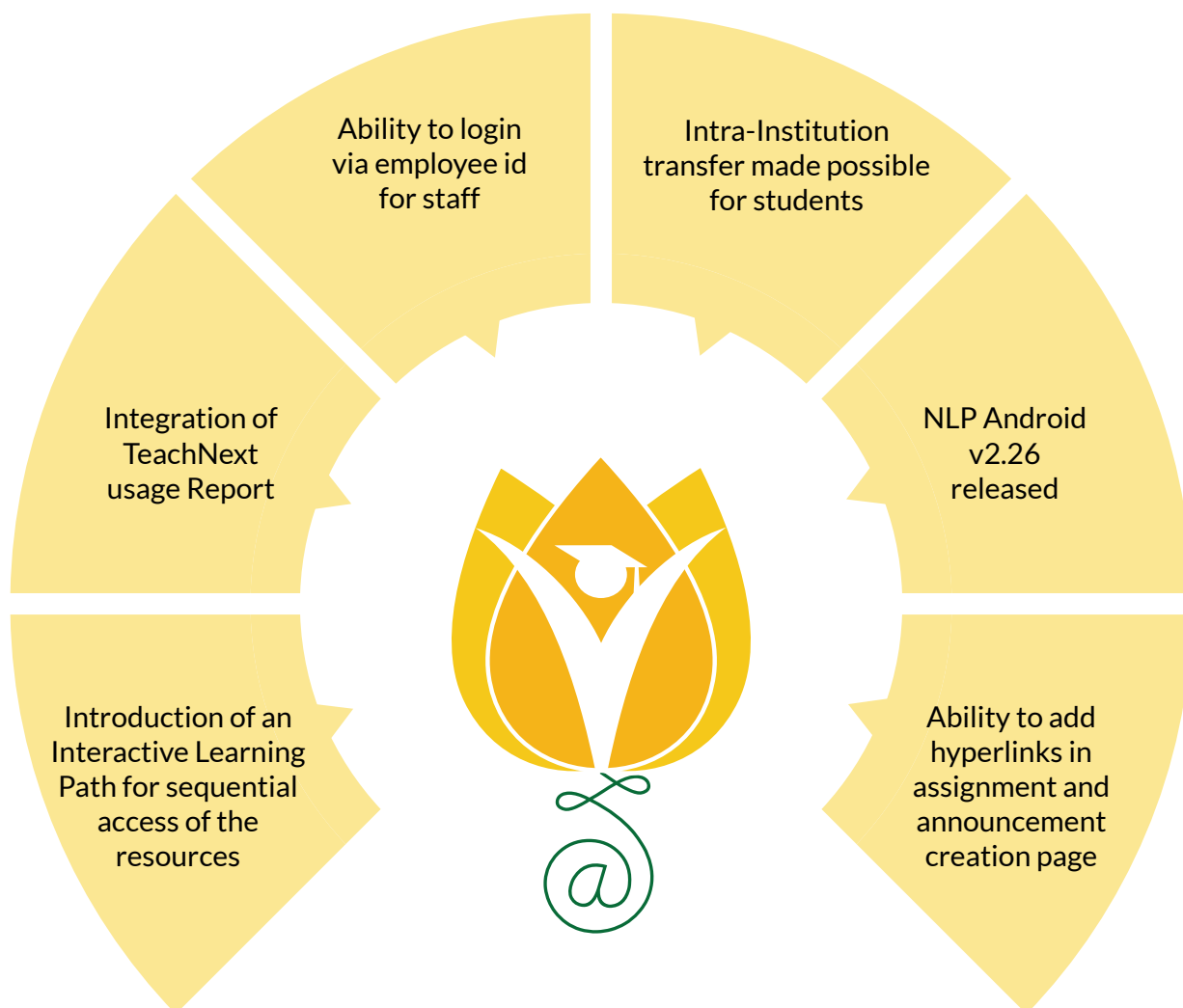
Creating a **Brighter Tomorrow** for Today's Students

# CONTENTS

LMS	04
Inventory	04
Student	05
Payroll	06
Fee	06
Assessment	06
NLP	06
Transport	06
LMS	06

**Dear Sir/Madam,**

In our endeavour to provide quality education, we have implemented our premier software, NextLearningPlatform (NLP) in your school. Our software aims to meet the dynamic needs of present-day schools. This software release incorporates a series of new features, improvements and additions which include the following:



# ADDITIONS IN THIS RELEASE

Module	Feature	Description
LMS	Enhancements in TeachNext	TeachNext Usage reports has been introduced under principal reports in LMS where usage data can be accessed class wise and staff wise.
	Introduction of Learning Path	An Interactive Learning Path for sequential access of the resources has been introduced under web as well as in android.
	Enhancements in Assignments	The check box "Show Assignments Pending for Return" displays the active and completed assignments for the last two months.
	Ability to add hyperlinks while creating assignments	Ability to add a hyperlink in the assignment and announcement creation page has been introduced.
	Enhancements in Assessments	Calculator support has also been added in Assessments, enabling students to use a calculator while attempting an exam.
Inventory	Date range filter added	A date range filter has been added in both the Inventory Purchase Request and the Payments Page.

# ADDITIONS IN THIS RELEASE

	<p>Enhancements in Purchase Returns</p>	<p>Enhancement regarding tagging of Assets in the Returns functionality has been added, in which the store incharge will be able to select the item units based on their unique serial ids that he or she wants to return manually. Otherwise, the system would follow the LIFO approach to return the item units.</p> <p>In addition to this update, the refund amount of a return will be calculated inclusive of Taxes and Discounts from now on. Which means, the new calculation would be the refund amount minus the discount plus tax where tax and discount can be fetched from GRN.</p>
<p>Inventory</p>	<p>Enhancements in functionality of Issuable assets</p>	<p>Now, there is an option to track the item units which are issued to students and staff. For this, the person in charge has to select the item units from the tracking icon while issuing them as well as while doing the issue return. Although, the tracking applicable radio button has to be enabled for selected items for tagging the units.</p>
	<p>Enhancement in Sales Report</p>	<p>Grand total option has also been added in the sale report where the user can see all the transaction's grand total like Cash/Credit Card/Debit Card/Cheque and wallet in the report. The user-wise collection details can be seen as well.</p>
<p>Student</p>	<p>Enhancements in Student Module</p>	<p>Now, students can be transferred from one school to another within the same institution. For this the admin of the current school has to initiate the student transfer process. However, parents can also initiate the transfer process, if allowed by school.</p>

# ADDITIONS IN THIS RELEASE

Payroll	Enhancement in Loans and Advancements	Staff can request for Loan/Salary Advance with either Disbursement date or Credit to Salary. There will be separate disbursement receipts for requests raised with the disbursement date. In case the Credit to Salary option is selected, the credited amount will be shown in Payslip. Also, Staff can choose in which month the loan/salary advance amount should be credited and from which month the loan EMI should start.
	New update in settlement function	There is an option to generate settlement slip from settlement date onwards.
Fee	Enhancement in Fee reports	VAT report has been introduced in fee reports.
Assessment	Enhancement in Assessments and Next Content	Summative and Formative assessment sections have been added under the Next Education menu in the Assessment Library in Exam Corner. These assessments would be provided by Next Education and are accessible by schools having content access.
NLP	Enhancement in Account Login Process	From now on newly activated staff users can login using employee id in addition to their email/phone as Username. The same password can be used to login while using employee id. For existing users, they have to login with their email/phone into NLP once and do logout and try to login again by using employee id.
Transport	Enhancement in Transport Report	Under Transport Maintenance Report the petrol consumption, mechanic cost and wear and tear of the parts columns have been added.

# ADDITIONS IN THIS RELEASE

NLP Android v2.26 Feature Updates	NLP	Prefix-based search has been introduced in staff and students search for Admin. Chatbot has also been introduced in the login page to help with login-related issues.
	Attendance	Staff can mark period-wise attendance of their respective classes.
	LMS	Under Feed, support for hyperlinks has been added in the assignment description. Also now, students can create new posts in feeds if enabled and the posts will go through teachers' approval first.

# INSTALLATION/UPGRADE NOTES



We highly recommend the use of Mozilla Firefox and Google Chrome browsers to access NLP. Find the latest versions at <https://support.mozilla.org/en-US/kb/update-firefox-latest-version>

Use the latest version of Adobe Reader for downloads. It can be accessed at <http://get.adobe.com/reader>

## COPYRIGHT INFORMATION

This document is a property of Next Education India Private Limited, and hence its circulation is limited to the customer schools. Printing additional copies is not permitted without authorised approval.



Next Education, NextGurukul, LearnNext and NLP are the registered trademarks of Next Education India Private Limited ([www.nexteducation.in](http://www.nexteducation.in)).

Other product names mentioned in the Release Notes are the registered trademarks of the respective companies.





**Next.Education**<sup>®</sup>  
Transforming Education



A vibrant community  
for K-12 stakeholders



## Next Education India Private Limited

Sri Nilaya Cyber Spazio, Road #2,  
Banjara Hills, Hyderabad 500034,  
Telangana, India.

Toll-free  
**Call** 1800 200 5566

Monday to Saturday (8:00 AM to 6:00 PM)

[www.nexteducation.in](http://www.nexteducation.in)

[support@nexteducation.in](mailto:support@nexteducation.in)

Hyderabad | Kochi | Noida | UAE