



Next.LearningPlatform[®]
Learning Anytime, Anywhere

RELEASE

NOTES



DECEMBER 2021 UPDATES

20 FEATURES



Next.Education[®]
Transforming Education

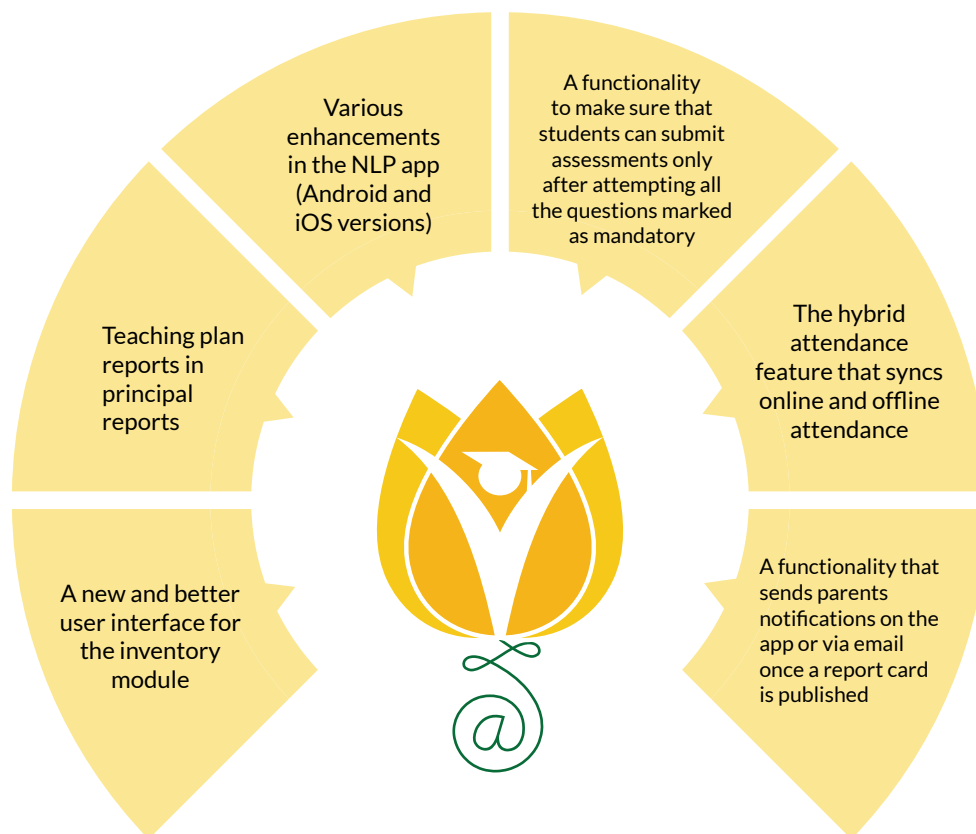
Creating a **Brighter Tomorrow** for Today's Students

CONTENTS

Assessments	04
Attendance	04
Fee	04
Inventory	04
Communication	04
Admission	04&06
LMS	05-06
School Setup	06

Dear Sir/Madam,

In our endeavour to provide quality education, we have implemented our premier software, Next Learning Platform (NLP) in your school. Our software aims to meet the dynamic needs of present-day schools. This software release incorporates new features, improvements and additions which include



ADDITIONS IN THIS RELEASE

Module	Feature	Description	Path
Admission	Additional features in the admission process	<ol style="list-style-type: none"> 1) You can now change auto-numbering to manual numbering while moving from enquiry to the next step in the admission process. 2) There is now a validation option to indicate if you have received a hard copy or not. 3) There is now more space to write remarks in every stage of the admission so that even the smallest details are recorded 	Admission --> Manage Admission --> Enquiry --> Select student --> Move to Next Step
Assessment	Enhancements in Exam Corner	<ol style="list-style-type: none"> 1) Co-teachers can copy an assessment and use it again. 2) Specific questions can be marked as mandatory. This will ensure that students cannot submit the test without attempting them. 3) Scores and annotations need not be saved separately as they can be saved with a single button on the evaluation screen. 	NA
Attendance	Enhancements in marking of attendance	<ol style="list-style-type: none"> 1) Teachers can now add remarks while marking attendance / doing roll calls on the app. 2) Hybrid attendance sync is now available on NLP. This means that online and offline attendance will be synced. 	NA
Communication	Notifications regarding report publishing and chat feature in the app	Parents will now receive notifications on the app or via email when a report card is published. Aside from this, a group chat option and one-to-one chat have been enabled in the app now.	Examination --> Report card Publish
Fee	Wallet Collection in the Today's Collection tab	Wallet Collection option has been added along with the other types of fee collections in the Today's Collection tab on the management dashboard.	NA
Inventory	Improved UI	<p>The inventory module is now equipped with a new and better UI with the following capabilities:</p> <ol style="list-style-type: none"> 1) The stock management is better than ever now. Transactions like student returns can be easily handled by the store-in-charge and credit notes can be generated, also, if required, staff can cancel such requests before it reaches the store-in-charge. 2) Items can now be uploaded in bulk. 3) Whenever new items are added into the system, it will automatically pick the opening balance for that particular item. 4) Purchase orders can now be easily edited, deleted, or cancelled as per requirement. 5) Stock of inventory items can be added manually without generating a purchase order, allowing items missed earlier due to any reason to be added with ease. 6) Vendors can now be mapped to the products. 	Inventory --> Transactions --> Sale/Purchase

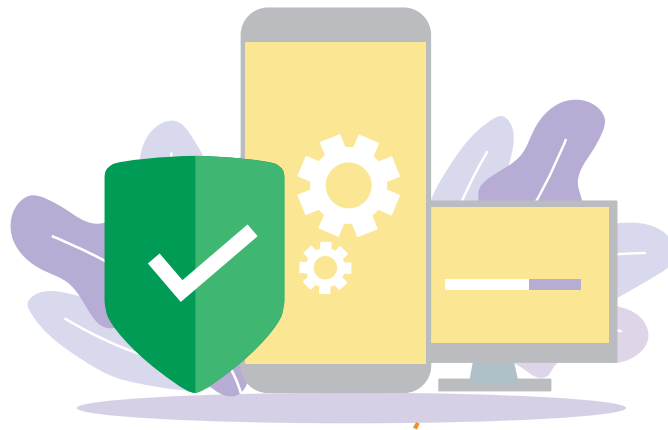
ADDITIONS IN THIS RELEASE

LMS	Inclusion of author's name in the question bank	Now, the author's name can be added in the question bank.	Exam Corner --> Question Bank
LMS	Inclusion of teaching plan reports in principal reports	Principal reports now also include teaching plan reports.	Principal Reports --> Teaching plan reports
LMS	Enhancements in admin settings of Activity and Feed	Now the admin has more control over who can view, who can post and who can comment on the feed.	Settings --> LMS Settings
LMS	Option to delete scheduled lectures from the calendar	A new option to delete scheduled lectures from the calendar has been added.	Calendar --> Select ALL --> Delete
LMS	Option to hide questions when assessment is hidden	Questions in an assessment can be hidden when the particular assessment is hidden.	Exam Corner --> Assessment Library
LMS	Inclusion of activity observation reports in principal reports	Activity observation report is now included under principal reports and HOD reports.	NA
LMS	Option to copy assessments and change questions	Teachers can now copy assessments and change questions in the question bank. (Note: A pop-up box with a warning to save or not to make changes will appear on the screen when a teacher is editing and saving questions.)	Exam Corner --> Question Bank
LMS	Enhancements in assignment feature	In the assignment tab, the following enhancements have been made: <ol style="list-style-type: none"> 1) Turn-in option has been enabled for teachers. This means that if an assignment has been taken offline and the teacher would still like to record it online, they can do it on behalf of the student. 2) Homework is gradable now. This means that teachers can assign marks based on a student's performance on homework or an assignment. 3) Improvements have been made to the homework return flow. Teachers now also have the option of withdrawing a returned assignment. 	Assignment --> Evaluation
LMS	Enhancements in assignment feature	Enhancements have been made on the evaluation page. Now teachers can write their feedback about an assignment both in the feedback box as well as on the page itself.	Exam Corner --> Exam Tracker --> Evaluation

ADDITIONS IN THIS RELEASE

LMS	Search option on My Courses page	A search option has now been added to the My Courses page in LMS.	Admin account --> Teacher Workspace
LMS	Enhancements in the NLP app (Android version)	<ol style="list-style-type: none"> 1) Parents can now get a read-only view of the resources / exam submissions / evaluations / assignment submissions / evaluations in the student workspace. 2) Activity Feed button has now been enabled in the app. 3) Users can now edit/delete their own comments on the feed. 4) Teachers can now make announcements on the feed. 5) A slider has been added in the preview option of feed attachments. 6) Improvement in upload progress 7) Portrait mode has been enabled. 8) A story icon has been introduced to give new updates regarding NLP. 9) A two-step verification flow has been added for Google sign-in. 	NLP app --> Home
LMS	Feature advancements in the NLP app (iOS version)	<ol style="list-style-type: none"> 1) Parents can now get a read-only view of the resources / exam submissions / evaluations / assignment submissions / evaluations. 2) Teachers and parents can now add captions to images. 3) Teachers can now make announcements on the feed. 4) Users can edit or delete their own comments on the feed. 5) A story icon has been added to give new updates regarding NLP 	NLP app --> Home
Admission	Generation of reports regarding mails sent to parents in the enquiry step	Now reports can be generated regarding mails sent to parents in the enquiry step of the admission process.	NA
School Setup	Student profile field enhancements	Support has been enabled for UDISE UID and OASIS CBSE registration numbers	Student --> Student List --> Add Student

INSTALLATION/UPGRADE NOTES



We highly recommend the use of Mozilla Firefox and Google Chrome browsers to access NLP. Find the latest versions at <https://support.mozilla.org/en-US/kb/update-firefox-latest-version>

Use the latest version of Adobe Reader for downloads. It can be accessed at <http://get.adobe.com/reader>

COPYRIGHT INFORMATION

This document is a property of Next Education India Private Limited, and hence its circulation is limited to the customer schools. Printing additional copies is not permitted without authorised approval.



Next Education, NextGurukul, LearnNext and NLP are the registered trademarks of Next Education India Private Limited (www.nexteducation.in).

Other product names mentioned in the Release Notes are the registered trademarks of



A vibrant community
for K-12 stakeholders



Next Education India Private Limited

Sri Nilaya Cyber Spazio, Road #2,
Banjara Hills, Hyderabad 500034,
Telangana, India.

Toll-free
Call 1800 200 5566

Monday to Saturday (8:00 AM to 6:00 PM)

www.NextEducation.in

support@nexteducation.in

Hyderabad | Kochi | Noida | UAE