



**Next LearningPlatform**<sup>®</sup>  
*Learning Anytime, Anywhere*

**RELEASE**

**NOTES**

**OCTOBER 2021 UPDATES**



**Next Education**<sup>®</sup>  
*Transforming Education*

Creating a **Brighter Tomorrow** for Today's Students

# CONTENTS

Accounts	03
Examination	03
FEE	04
Inventory	04
LMS	04
My Workspace	05
NLP	05
NLP App	05
Recruitment	06
LMS	06
Exam Corner	07

# ADDITIONS IN THIS RELEASE

Features	Ticket	Description	Path	Module	Product Manager
Cost Centre	462442	On the Cost center page users should be able to map the cost center by selecting a category,( Eg: Assets, Liabilities,Expenses, income etc.), sub-category, Group, Sub-group, and displayed ledgers.	Settings Button >>Accounts>>- Cost Centre	Accounts	Jay
Fee Accounting enhancements	461359	1. Due reversal should happen in the same voucher 2. Fee Collection through Student Wallet	NA	Accounts	Jay
Enhancements in Charts of Account and Ledger view	456736 459518 461086	In the Accounting module there are several page enhancement for making it more user friendly, Options like uploading charts of accounts in bulk,Treatment of cash, bank account and other ledger types under ledger creation page has been introduced.Even there are further enhancement in voucher entry page to make it more user friendly	For Settings : Click on Setting side >> Accounts Setting Side>> Accounts>Charts of accounts >>Bulk upload	Accounts	Jay
Enhancements in Exam Corner	459096	Report Card- Subject and Activity level graph implemented at term and assessment level		Examination	

# ADDITIONS IN THIS RELEASE

Features	Ticket	Description	Path	Module	Product Manager
Fee Reports	461088	Fee custom report enhancements - Class wise report (Row group) need to have installment as column group 1 and fee type as column group 2 - Need to add payment ID in all receipt wise collection custom report	Transaction side>> Fee>> Fee Reports	Fee	Jay
Fee Enhancements	461361	-User should be able to add PDC from payment success page in fee collection - Create annual balance key for fee receipt template	Transaction side>> Fee>> Collect Fee >> Search an dselect Student name>>- Make receipt>>- convert to PDC	Fee	Jay
Inventory Request from staff	461688	School Staff can make request for Sale and an Issue, which would be processed by respective store in-charge. For Issue request, it has to be approved by any Approver, if configured by the branch	Inventory --> My Transactions --> Sale TAB --> Add Sale Request.  Inventory ---> My Transactions --> Issue TAB --> Add Issue Request	Inventory	Kamraj
Institutional Capabilities	462385	Enhancements in institutional import & Copy settings : Institutional branch course plans can be imported to child branches	Importing of institutional course plans through course import option	LMS	Madhan

# ADDITIONS IN THIS RELEASE

Features	Ticket	Description	Path	Module	Product Manager
PP LMS & Feed	461758	Teachers will now be able to record and update every activity (for instance, a learning activity, food, nap or other activities) of students during a day spent in class. This is an extremely useful feature for not only pre-primary/primary classes but also in middle and higher school. For instance, moments from live classroom projects, lab experiments, science exhibitions, non-academic events such as annual day etc. can all be captured and shared with students and parents in an instant!	My Workspace >> Activity Observation >> creat new	LMS	Madhan
Student Work Space	460402	Search by resource at course level in Student workspace	Student work-space >> Course >> search resource at chapter level	LMS	Madhan
Global resource library	461532	Embed PPT file-user can paste an embed link and create a resource in LMS / GRL	Create New resource >> Embed resource	MyWorkspace	Madhan
Enhancement in Cheque Lifecycle	460876	Cheque Life Cycle : Cheque Life Cycle - User should be able to Cancel cheque from Received status. Whether it is PDC / Normal Cheque, the associated collections for the cheque also should be cancelled.	Create New resource >> Embed resource	NLP	Jay
NLP App Enhancements For Teachers	461475 461476 461479	In teacher login In NLP APP Introducing Webview button on the below bar of app - Assignment - Exam corner		NLP App	N/A

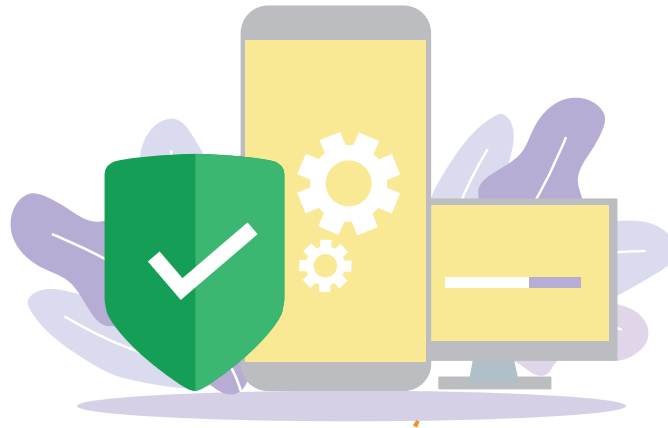
# ADDITIONS IN THIS RELEASE

Features	Ticket	Description	Path	Module	Product Manager
NLP App General changes	461474 461479	1) After Teacher Evaluate the Homework, Student will get the Notification to Check the remarks 2) Introducing graded assessments		NLP App	N/A
Smart Filter	461228	Smart filters for recruitment: By clicking the APPLY button on the job description page, the candidate should be able to answer the validation questions asked by HR.	Candidate Login --> Jobs --> View -->Apply	Recruitment	Kamraj
Activity Observation		Activity Observation - Teachers can capture activities performed by students in the class (through video, audio etc.). Activity observation serves as an evidence of learning. Teachers can also tag Learning Outcomes and students being observed.	My Workspace -> Activities	LMS	Aaditya
Feed		Feed - A one-stop screen to keep a track of all that is happening in Next LMS - announcements by teachers, homework assigned, observations posted by teachers and so on	My Courses -> <Course> -> Feed	LMS	Aaditya
Duplicate Assessments	460408	To make a copy of an assessment from one class to another.	Exam Corner -> Assessments Library -> Select Assessment -> Options	Exam Corner	Pruthvi

# ADDITIONS IN THIS RELEASE

Features	Ticket	Description	Path	Module	Product Manager
Evaluation Page Enhancements		<ol style="list-style-type: none"><li>1. Teacher can submit for a student who started an assessment attempt but couldn't end it, i.e., marking the student's attempt as complete and available for evaluation.</li><li>2. Count of files uploaded by students are displayed to teacher on evaluation page</li></ol>	Exam Corner -> Examination -> Evaluation	Exam Corner	Pruthvi
More file types allowed for upload in assessments		File formats (.ppt, .mp3, .mp4, .docx) are now allowed for upload by students in assessments	N/A	Exam Corner	Pruthvi

# INSTALLATION/ UPGRADE NOTES



We highly recommend the use of Mozilla Firefox and Google Chrome browsers to access NLP. Find the latest versions at <https://support.mozilla.org/en-US/kb/update-firefox-latest-version>

Use the latest version of Adobe Reader for downloads. It can be accessed at <http://get.adobe.com/reader>

## COPYRIGHT INFORMATION

This document is a property of Next Education India Private Limited, and hence its circulation is limited to the customer schools. Printing additional copies is not permitted without authorised approval.



Next Education, NextGurukul, LearnNext and NLP are the registered trademarks of Next Education India Private Limited ([www.nexteducation.in](http://www.nexteducation.in)).

Other product names mentioned in the Release Notes are the registered trademarks of the respective companies.





**Next.Education**<sup>®</sup>  
Transforming Education



A vibrant community  
for K-12 stakeholders



### Next Education India Private Limited

Sri Nilaya Cyber Spazio, Road #2,  
Banjara Hills, Hyderabad 500034,  
Telangana, India.

Toll-free  
**Call 1800 200 5566**

Monday to Saturday (8:00 AM to 6:00 PM)

[www.NextEducation.in](http://www.NextEducation.in)

[support@nexteducation.in](mailto:support@nexteducation.in)

Hyderabad | Kochi | Noida | UAE